



## The Alfred Roosevelt Memorial Regatta

May 16-17, 2009

Organizing Authority - Seawanhaka Corinthian Yacht Club  
Oyster Bay, Long Island Sound

### SAILING INSTRUCTIONS

#### 1 RULES

- 1.1 The regatta will be governed by the rules as defined in *The Racing Rules of Sailing* (RRS), the IRC Rules, Parts 1, 2, and 3; the current PHRF Regulations, as administered by the YRS of Long Island Sound (YRALIS), and the Minimum Equipment and Safety Recommendations of the YRALIS, Category C.
- 1.2 RRS 14 will be changed for boats in Division 3 only (Classic yachts): all competitors are required to keep clear of all other boats in the Division by no less than 30 feet.

#### 2 NOTICES TO COMPETITORS AND SCRATCH SHEETS

Notices to competitors and scratch sheets will be posted on the official notice board at Seawanhaka's Clubhouse, on their website; [www.seawanhaka.org](http://www.seawanhaka.org) and at [www.yachtscoring.com](http://www.yachtscoring.com).

#### 3 CHANGES TO SAILING INSTRUCTIONS

Any change to the sailing instructions will be posted before 0900 on the day it will take effect, except that any change to the schedule of races will be posted by 2000 on the day before it will take effect. Notice of any changes will also be broadcast on Channel 69 at 0900 each day.

#### 4 SCHEDULE OF RACES

- 4.1 Dates of racing are May 16 and May 17 for all classes.
- 4.2 Number of Races:

<u>Class</u>	<u>Division</u>	<u>Races per day</u>
IFC	1	1 race
PHRF	2	1 race
Classic	3	1 race

- 4.3 The scheduled time of the first start signal for the race each day is 1100.

#### 5 DIVISION FLAGS

Class flags will be:

<u>Division</u>	<u>Flag</u>
IRC	Numeral 1
PHRF	Numeral 2
Classic	Numeral 3

5.2 Due to pursuit start time calculations, starting times may overlap among some boats in Division 1 and 2.

## 6 RACING AREAS

6.1 There will be two separate race areas to which Divisions are assigned, the Sound Course (for Divisions 1 and 2) and the Oyster Bay Course (for Division 3).

6.2 The Sound Course will be in Long Island Sound. The start and finish will be located mid-sound near Government Mark 32A (designated Mark T in these sailing instructions). Communications for Divisions racing on the Sound Course will be conducted on VHF channel 69.

6.3 The Oyster Bay Course will start and finish at Oyster Bay Mark 5 [G FL] (designated Mart F in these sailing instructions) and will include legs in Long Island Sound. Communications for Division 3 racing on the Oyster Bay Course will be conducted on VHF channel 69.

## 7 THE COURSES

7.1 Division 3 – Classics; The Oyster Bay Course will be as follows; Start at F, K, G, R, T, K, Finish at F. Marks are listed on Attachment B. The Race Committee Signal Boat will not display the course.

7.2 Divisions 1 and 2 – IRC/PHRF; The Race Committee Signal Boat will signal the Sound Course by the letters according to Attachment A. Marks shall be rounded in the order signalled (reading the course board by column, top-down then fore-aft) and left on the hand so that the rhumb line to the next mark will not cross the rhumb line from the previous mark. If the next mark is reciprocal, the mark shall be left to port when rounding.

7.3 If XX is signalled as a mark of the course, the course board will display the magnetic bearing and the range in nautical miles from the Race Committee Signal boat to mark XX. Bearing and range will only be signalled if mark XX is a mark of the course.

7.4 A sample course board using marks is shown below (labels will not be displayed on the Signal Boat). In this example the sequence of marks would be: Start, KK, XX, HH, FF, Finish. (Notice that XX is at a bearing of 230 degrees at a range of 2 nautical miles in this example below.)

Mark	Mark	Bearing	Range
KK	FF	2	2
XX		3	
HH		0	

Fore Aft

## 8 MARKS

8.1 Marks will be Government Marks. The locations of the marks are indicated in Addendum A for the Sound Course and Addendum B for the Oyster Bay Course. Mark XX, if signalled, will be an inflatable mark located at a range and bearing from the Committee Signal Boat and as displayed on the course board. Mark XX may be used anywhere on the course.

## 9 THE START

9.1 The start shall use a "Pursuit" format wherein each boat's handicap will be determined prior to the start of the race and the time correction shall be used to create their assigned start time. Races will be started as follows: A warning signal shall be made at 5 minutes prior to the start for the first boat

and will follow the sequence used under RRS 26. After the first start, the Race Committee will make a sound signal for each boat's starting time. The first start is planned to be at 1100 both days. This changes RRS 26.

- 9.2 Each competitor will start no earlier than his appointed starting time which will be given in the Scratch Sheet available after 1800 on Friday, May 15 at [www.seawanhaka.org](http://www.seawanhaka.org) , or [www.yachtscoring.com](http://www.yachtscoring.com) . The Race Committee may also broadcast start times on VHF channel 69 for each Course for information only. Failure to hear the radio transmission will not be grounds for redress.
- 9.2 For Divisions 1 and 2, (IRC and PHRF) the starting line will be between a staff displaying an orange flag on a Race Committee Boat and a nearby inflatable mark at the port-end near 32A in Long Island Sound.
- 9.3 For Division 3 (Classic Yachts) the starting line will be between Government Mark F5 and a staff displaying an orange flag on a Race Committee Signal Boat moored at the edge of the Seawanhaka mooring field on the port-end.
- 9.4 Boats whose start time is not immediately impending shall keep clear of the starting area.
- 9.5 The Race Committee will attempt to identify boats that are on course side before their start time and to broadcast their sail numbers on VHF channel 69. Failure of a boat to see or hear her recall notification shall not be cause for redress.

## **10 THE FINISH**

- 10.1 For Divisions 1 and 2, the finishing line will be between a staff displaying an orange flag on the Race Committee Boat displaying a blue flag or shape at the starboard end and an inflatable mark at the port-end expected to be in the area of "32A" (Regatta Mark T).
- 10.2 For Division 3, the finishing line will be between a staff displaying an orange flag on the Race Committee Boat displaying a blue flag or shape at the starboard end and Oyster Bay Buoy 5 [G Fl] (Regatta Mark F) on the port end.
- 10.3 If a course is shortened, the finish line will be between a staff displaying flag S on a Race Committee Boat and a rounding mark of the course.

## **11 PENALTY SYSTEM**

- 11.1 At the first reasonable opportunity immediately after a race, a boat that has taken a Two-Turns Penalty shall report that fact to the Race Committee on VHF channel 69 and identify the other boat(s) involved in the incident.

## **12 TIME LIMITS AND TARGET TIMES**

- 12.1 Time limits and target times are as follows:

<u>Division</u>	<u>Time Limit</u>	<u>Target Time to Finish</u>
1	6 hours	4 hours
2	6 hours	4 hours
3	6 hours	4 hours

- 12.2 Any boat withdrawing before the start or retiring from a race for any reason shall notify the Race Committee at the earliest possible opportunity on VHF channel 69.

## **13 PROTESTS AND REQUESTS FOR REDRESS**

- 13.1 RRS 61.1(a) is modified to require the conspicuous display of a red flag from the backstay, or, in the absence of a backstay, on the stern rail.

- 13.2 RRS 61.1(a) is modified to include the following procedure: Immediately after finishing, a protesting boat shall notify the Race Committee over the race course VHF channel of its intent to lodge a protest.
- 13.3 The Race Committee will identify all protests for that race received by the Committee by broadcast over the race course VHF channel. Broadcasts will commence approximately after the first protest is received and will be repeated at approximate 15-minute intervals until after the last boat has finished. These broadcasts constitute the notification of hearing to a protested boat required by RRS 61.1.
- 13.4 Written protests shall be delivered to the Protest Committee desk in Seawanhaka Clubhouse within one hour of the time that the Race Committee signal boat docks. This time limit will be posted on the official Race Committee Notice Board. A list of protests filed with the Protest Committee will be posted on the official Race Committee Notice Board.
- 13.5 Protest hearings will be held at Seawanhaka Corinthian Yacht Club as soon as possible after each day of racing.

## **14 SCORING**

- 14.1 The Low Point System of Appendix A will apply.
- 14.2 The scoring system is as follows: Each Division will be scored separately and corrected using the handicap for that Division. In addition, the IRC and PHRF Divisions will be scored together to determine the winner of the Alfred Roosevelt Cup.
- 14.3 One race is required to be completed to constitute a series.

## **15 SAFETY REGULATIONS**

- 15.1 A boat that retires from a race shall notify the race committee as soon as possible on Channel 69.

## **16 RADIO COMMUNICATION**

Except in an emergency, a boat shall neither make radio transmissions while racing nor receive radio communications not available to all boats. This restriction also applies to mobile telephones.

## **17 PRIZES**

Prizes will be given as follows: First, second and third place will be awarded in all three Divisions; IRC, PHRF and Classic. The Alfred Roosevelt Cup will be awarded to the best performance among the IRC and PHRF Divisions. In the event of a tie the Race Committee will determine the winner at its discretion.

## **18 DISCLAIMER OF LIABILITY**

Competitors participate in the regatta entirely at their own risk. See RRS 4, Decision to Race. The organizing authority will not accept any liability for material damage or personal injury or death sustained in conjunction with or prior to, during, or after the regatta.

**Seawanhaka Corinthian Yacht Club cordially extends the privileges of the Clubhouse and harbour facilities to participants before and after the races.**

Paul Nardone, Jr. – Principal Race Officer, Sound Course  
Andrew Kennedy – Principal Race Officer, Oyster Bay Course  
William R. Denslow, Jr. – Regatta Co-Chairman  
B. Hunt Lawrence – Regatta Co-Chairman  
E. Eric Johnson – Protest Committee Chairman

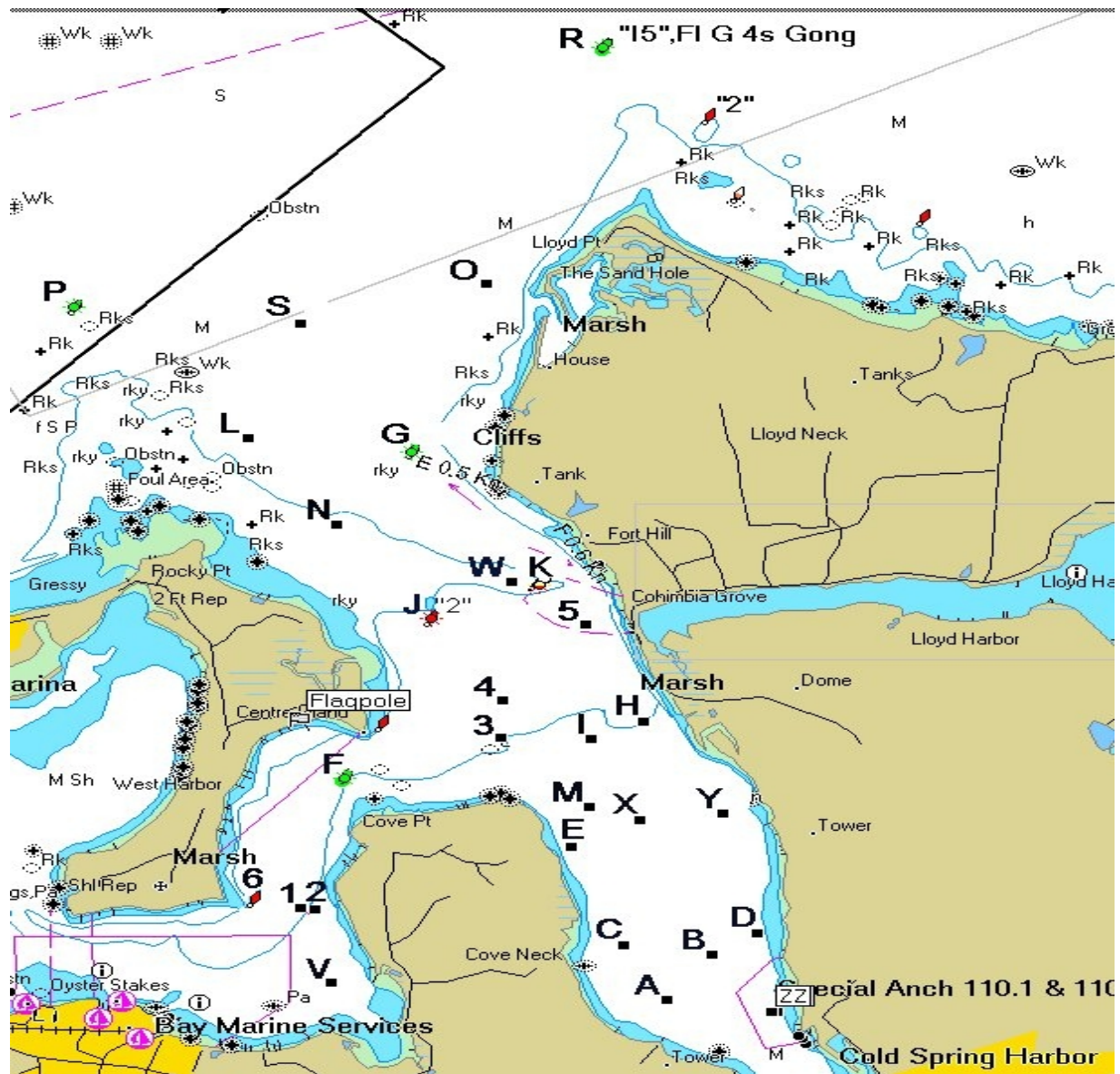
# ADDENDUM A



Mark Letter	Location	Buoy	Characteristics	Latitude		Longitude	
				(Deg)	(Min)	(Deg)	(Min)
<b>Out of Harbor Chart</b>				(Deg)	(Min)	(Deg)	(Min)
A-A	Mamaroneck Harbor	R'42"	FI R 2.5 sec Bell	40	55.64	73	42.13
B-B	Transport Shoal	R"38"	FI R 4 sec Bell	40	57.65	73	39.61
C-C	Bluefish Shoal	R"36"	Bell	40	58.28	73	38.78
D-D	Little Captain I. (Hen & Chickens)	G"1"	FI G 2.5 sec Gong	40	59.77	73	35.80
E-E	Greenwich Point	R'34"	Nun	40	59.9	73	33.90
F-F	The Cows (Stamford)	R'32"	FI R 6 sec Bell	41	00.35	73	31.44
F	Clubhouse Channel	G"3"	FI G 4 sec	40	53.85	73	30.60
G	West of Lloyd Neck	G"1"	Gong	40	55.56	73	30.25
H-H	Cable & Anchor Reef	R"28C"	FI R 4 sec Bell	41	00.70	73	25.13
I-I	Mid-Sound N. of Eaton's Neck	G"11B"	FI G 4 sec Gong	41	00.16	73	23.67
J-J	Eaton's Neck	GR"E"	Can - Red & Green	40	58.70	73	24.49
J	Sandbar - off C.I.	R"2"	Nun	40	54.67	73	30.14
K-K	Oak Neck	G"19"	Can	40	55.46	73	34.20
K	Lighthouse	Gvmt	Spire-37ft-7m-Red/White	40	55.01	73	29.63
P	Centre Island Reef	G"17"	Bell	40	56.31	73	31.96
R	North of Lloyd Neck	G"15"	Gong	40	57.69	73	29.24
T	Mid-Sound Buoy	R"32A"	FI R 2.5 sec Bell	40	58.26	73	32.78

# Addendum B – Oyster Bay/Cold Spring Harbour

## . T “32A”



Mark Letter	Location	Buoy	Characteristics	Latitude		Longitude	
				(Deg)	(Min)	(Deg)	(Min)
<b>Alfred Roosevelt Classic Course - 2009</b>				<b>(Deg)</b>	<b>(Min)</b>	<b>(Deg)</b>	<b>(Min)</b>
F	Clubhouse Channel	G"3"	FI G 4 sec	40	53.85	73	30.60
G	West of Lloyd Neck	G"1"	Gong	40	55.56	73	30.25
K	Lighthouse	Gvmt	Spire-37ft-7m-Red/White	40	55.01	73	29.63
P	Centre Island Reef	G"17"	Bell	40	56.31	73	31.96
R	North of Lloyd Neck	G"15"	Gong	40	57.69	73	29.24
T	Mid-Sound Buoy	R"32A"	FI R 2.5 sec Bell	40	58.26	73	32.78